

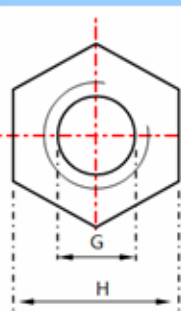
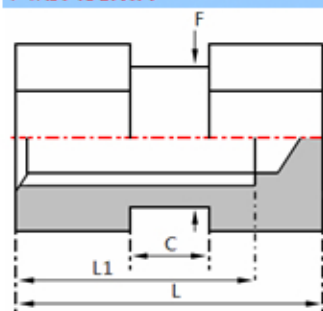
Part Number Designation :

HIB - M4 - 6
 ↓ ↓ ↓
 型号 螺纹规格 长度



公制规格表 (单位 MM):

螺纹规格	型号			六角对边 H ±0.1	F ±0.1	螺纹内径 G	C ±0.1	长度 L ±0.1
	黄铜	碳钢	不锈钢					
M2.5*0.4	HIB	HIC	HIS	4.75	4	2.1+0.08	0.6	3
							1	4
							1.5	5
							2	6
							2.5	8
M3*0.5	HIB	HIC	HIS	5	4.2	2.5+0.10	3	10
							0.6	3
							1	4
							1.5	5
							2	6
						2.5	8	
						3	10	
						3	12	
						4	15	
						2.5+0.12	5	20
M4*0.7	HIB	HIC	HIS	6	5.2	3.3+0.10	1	4
							1.5	5
							2	6
							2.5	8
							3	10
						3	12	
						4	15	
						3.3+0.12	5	20
M5*0.8	HIB	HIC	HIS	8	6.8	4.2+0.10	1.5	5
							2	6
							2.5	8
							3	10
							3	12
						4	15	
						4.2+0.12	5	20
M6*1.0	HIB	HIC	HIS	10	8.5	5.0+0.10	1.5	5
							2	6
							2.5	8
							3	10
							3	12
						4	15	
						5.0+0.12	5	20
M8*1.25	HIB	HIC	HIS	12	10.5	6.8+0.10	2	6
							2.5	8
							3	10
							3	12
							4	15
						6.8+0.12	5	20



Part Number Designation :

HIB-B - M4 - 6

↓
型号↓
螺纹
规格↓
长度

公制规格表 (单位 MM):

螺纹规格	型号			六角对边 H ±0.1	F ±0.1	螺纹内径 G	C ±0.1	长度 L ±0.1	螺纹深 L1 Min
	黄铜	碳钢	不锈钢						
M2.5*0.4	HIB-B	HIC-B	HIS-B	4.75	4	2.1+0.08	2	6	3
							2.5	8	4
							3	10	6
							2.1+0.1	3	12
M3*0.5	HIB-B	HIC-B	HIS-B	5	4.2	2.5+0.1	2	6	3
							2.5	8	4
							3	10	6
							3	12	8
						4	15	10	
2.5+0.12	5	20	12						
M4*0.7	HIB-B	HIC-B	HIS-B	6	5.2	3.3+0.1	2	6	3
							2.5	8	4
							3	10	6
							3	12	8
						4	15	10	
3.3+0.12	5	20	12						
M5*0.8	HIB-B	HIC-B	HIS-B	8	6.8	4.2+0.1	2.5	8	4
							3	10	6
							3	12	8
							4	15	10
						4.2+0.12	5	20	12
M6*1.0	HIB-B	HIC-B	HIS-B	10	8.5	5.0+0.1	2.5	8	4
							3	10	6
							3	12	8
							4	15	10
						5.0+0.12	5	20	12
M8*1.25	HIB-B	HIC-B	HIS-B	12	10.5	6.8+0.1	3	12	8
							4	15	10
						6.8+0.12	5	20	12